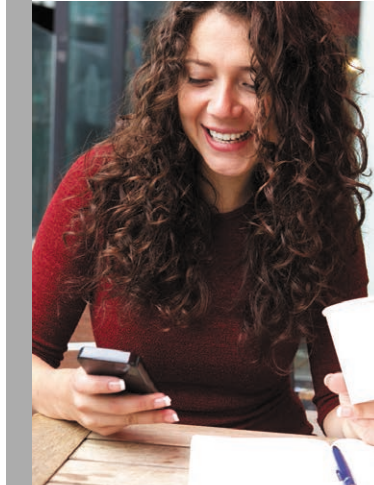


# Stock Yards<sup>®</sup> Bank & Trust

A TRUSTED PARTNER  
since 1904

MEMBER FDIC



## CHECKING SERVICES

### Account Benefits

- » **FREE** Debit Card
- » **FREE** Online Banking & Bill Pay
- » **FREE** Stock Yards Bank ATM transactions
- » 24 Hour Banking Services and Much More!



LOUISVILLE (502) 582-2571 INDIANAPOLIS (317) 238-2888 CINCINNATI (513) 824-6111 TOLL FREE (800) 625-9066

Security   
and Savings  all in one place....

Ask us **SECURE**  
about **CHECKING** today!

### Quick View Account Comparisons

Checking Account	Minimum To Open Account	Minimum Daily Balance Requirement	Monthly Service Charge	Check Writing
Secure	\$50	NONE	\$7	Unlimited
Basic	\$50	NONE	NONE with eStatements <sup>5</sup>	50¢ each after 1st 5 written per month
Student <sup>7</sup>	\$50	NONE	NONE with eStatements <sup>5</sup>	50¢ each after 1st 5 written per month
Premier Interest <i>Interest Earned (Daily Balance Method)</i>	\$50	\$1,000 or \$5,000 in Total Deposits <sup>3</sup>	\$10 (if balance does not meet requirements)	Unlimited
SYB 50+ Interest <i>Interest Earned (Daily Balance Method)</i>	\$50	\$100 or \$5,000 in Total Deposits <sup>3</sup>	\$4 (if balance does not meet requirements)	Unlimited
Platinum <sup>2</sup> <i>Interest Earned (Daily Balance Method)</i>	\$10,000	\$10,000 or \$25,000 in Total Deposits <sup>3</sup> or \$50,000 in Total Loans <sup>4</sup>	\$15 (if balance does not meet requirements)	Unlimited

1. SYB 50+ Interest Checking permits one order of checks at no charge per calendar year. Check orders over the one order limit; the account holder will be required to pay 50% of the check order cost.

2. Platinum Checking requires \$10,000 to open; all other accounts have a minimum opening deposit of only \$50.00. You may be charged a fee by another bank when using a Stock Yards Bank ATM card at its ATM when making cash withdrawals. For all accounts except SYB 50+ and Platinum there is a \$2.00 fee for non SYB ATM transactions in excess of 4 transactions per statement cycle. Offer good on personal accounts only; business and corporate accounts do not qualify for these plans. Bank rules and regulations apply. Ask us for details.

3. Total deposits include Stock Yards Bank Savings Accounts, Certificate of Deposit Accounts, Individual Retirement Accounts, Money Market Accounts, or other Checking Accounts.

4. Total Loans include Stock Yards Bank Home Equity Lines and Loans, and other consumer loans (first mortgages not included).

5. There is a \$3.00 monthly service fee for Basic & Student Checking. A \$3.00 credit will be applied to your account if you choose eStatements. Online Banking is required to receive eStatements.

6. After 5 free check maximum per month, there is a 50¢ per check fee.

7. Must have valid Student Identification at time of account opening.

#### Basic checking

*Meets basic needs!*

- NO MINIMUM BALANCE REQUIRED
- NO MONTHLY SERVICE CHARGE WITH E-STATEMENTS<sup>5</sup>
- FIVE **FREE** WRITTEN CHECKS PER MONTH<sup>6</sup> & **FREE** E-STATEMENTS<sup>5</sup>

#### Student checking<sup>7</sup>

*Simple and economical for students!*

- NO MINIMUM BALANCE REQUIRED
- NO MONTHLY SERVICE CHARGE WITH E-STATEMENTS<sup>5</sup>
- FIVE **FREE** WRITTEN CHECKS PER MONTH<sup>6</sup> & **FREE** E-STATEMENTS<sup>5</sup>
- FOUR FOREIGN ATM TRANSACTIONS PER MONTH REIMBURSED

#### Premier Interest checking

*Your checking balance earns money!*

- INTEREST PAID MONTHLY
- UNLIMITED CHECK WRITING
- NO SERVICE CHARGE WITH \$1,000 MINIMUM DAILY BALANCE OR \$5,000 IN TOTAL DEPOSITS<sup>3</sup>
- \$10.00 MONTHLY FEE APPLIED IF BALANCE REQUIREMENT NOT MET

#### SYB 50+ Interest checking

*Added benefits for customers 50 and over!*

- AVAILABLE TO ANYONE 50 YEARS +
- INTEREST PAID MONTHLY AND UNLIMITED CHECK WRITING
- HIGHER INTEREST RATES EARNED ON HIGHER BALANCES
- **FREE** LOGO CHECKS<sup>1</sup>
- \$10 DISCOUNT ON FIRST YEAR RENTAL OF A SAFE DEPOSIT BOX
- **FREE** UNLIMITED ATM TRANSACTIONS
- NO SERVICE CHARGE WITH \$100 MINIMUM DAILY BALANCE OR \$5,000 TOTAL DEPOSITS<sup>3</sup>
- \$4 MONTHLY FEE APPLIED IF BALANCE REQUIREMENTS ARE NOT MET

#### Platinum checking<sup>2</sup>

*An account for those interested in higher interest!*

- INTEREST PAID MONTHLY
- UNLIMITED CHECK WRITING
- HIGHER INTEREST RATES EARNED ON HIGHER BALANCES
- **FREE** LOGO CHECKS AND OFFICIAL CHECKS
- **FREE** UNLIMITED ATM TRANSACTIONS
- MINIMUM BALANCE OF \$10,000 REQUIRED TO OPEN
- NO SERVICE CHARGE WITH \$10,000 MINIMUM DAILY BALANCE OR \$25,000 IN TOTAL DEPOSITS<sup>3</sup> OR \$50,000 IN TOTAL LOANS<sup>4</sup>
- \$15 MONTHLY FEE APPLIED IF BALANCE REQUIREMENTS ARE NOT MET